

WELCOME TO

ALVASTON JUNIOR ACADEMY

BELIEVE

ACHIEVE

SUCCEED

OUR SCHOOL



# WELCOME



**Alvaston Juniors has a special atmosphere that you can feel as soon as you walk through the door. Our friendly, professional, hard-working staff team and wonderful children that attend our school are happy to be part of our school community. Pupils work hard, behave well and strive to fulfil their true potential. We celebrate success, reflect on our practice and challenge one another to make continuous improvements.**

I am very lucky to work in a school where all staff are passionate in their mission to support pupils to build life skills for a bright future and equip them to live in the 21st Century. Pastoral care and provision is intertwined with teaching and learning and pupils' well-being is at the core of daily practice. We have very high expectations of standards and behaviour at all times, and expect parents to be supportive of school,

particularly on the issues of attendance, punctuality, behaviour, and attitudes to school and learning.

We firmly believe that education is a partnership between home and school, and we place parental involvement high in our school's priorities. I have no doubt, that with your support and cooperation, your child will go on to achieve success in this and their next chapter of education.





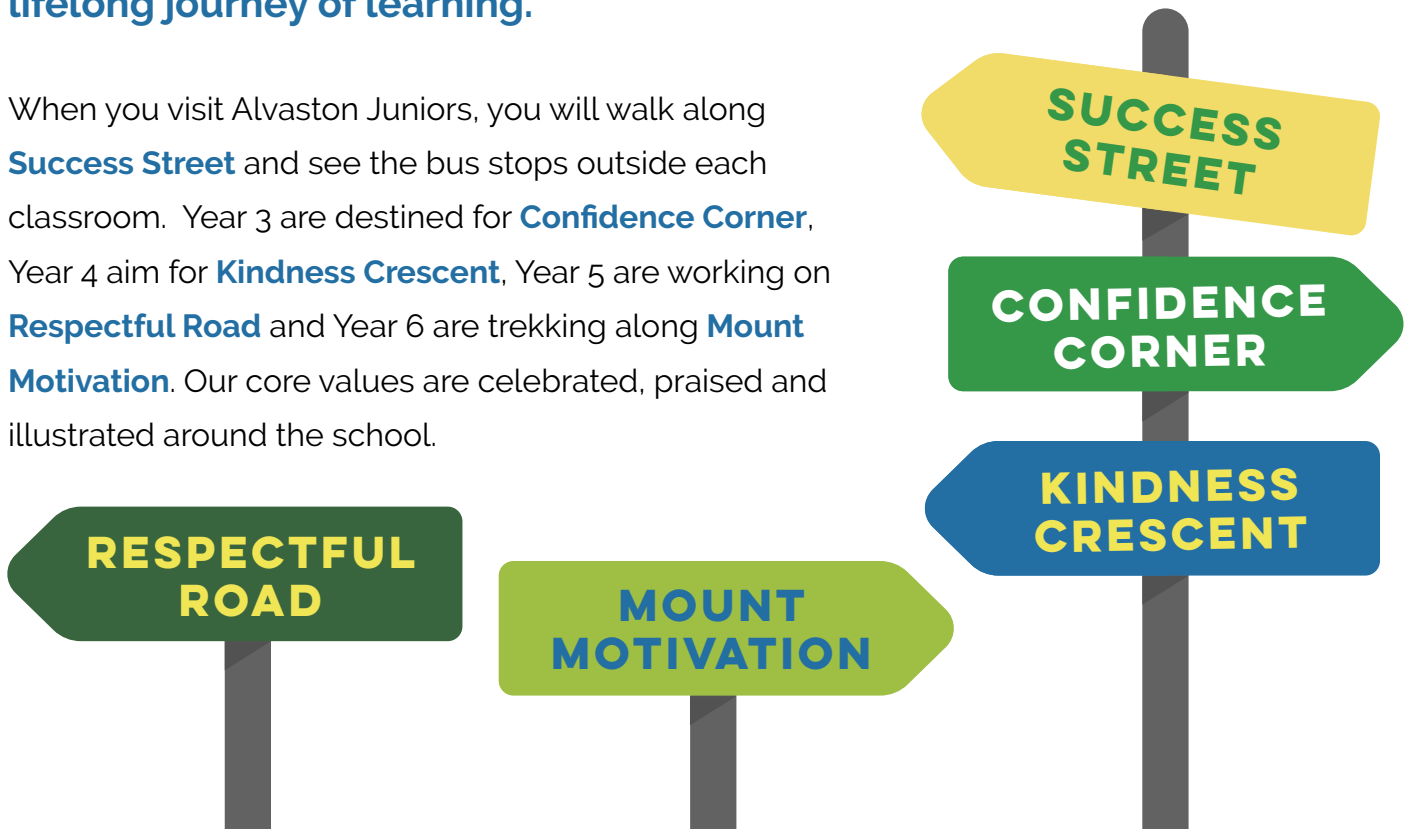
Our pupils and staff leave lasting positive impressions on visitors who always want to return! Alvaston Junior Academy is a unique place to be and we welcome the opportunity to share this with other families and children in our community who are interested in joining our school.

Mrs Spencer-Lovesey, Head of Academy - Principal



Based on the outskirts of inner city Derby, with children from all backgrounds attending, we offer an environment where children experience and celebrate success - where they feel part of a team on a lifelong journey of learning.

When you visit Alvaston Juniors, you will walk along **Success Street** and see the bus stops outside each classroom. Year 3 are destined for **Confidence Corner**, Year 4 aim for **Kindness Crescent**, Year 5 are working on **Respectful Road** and Year 6 are trekking along **Mount Motivation**. Our core values are celebrated, praised and illustrated around the school.



Through personalised stickers, our termly **Values Champion Medal** and **Postcards** home to share with parents how our pupils have met the **Alvaston Code**, our pupils are immersed in an environment where they are consistently reminded of their ability to aim high, and be the owners of their future. The pupils of the school council collaborated to write the Alvaston Code and Alvaston Prayer which are shared in collective assemblies.

## The Alvaston Code

We have confidence in our abilities

We show kindness every day

We respect ourselves and each other  
and are motivated in every way!

We are AJA!



# OUR ETHOS

Our School ethos promotes a love of reading through the trust wide initiative;



**READ**



**ACHIEVE**



**SUCCEED**

Reading for pleasure is a whole school priority. Termly 'Read Achieve Succeed' parent events are held in each year group; encouraging parents to engage with reading activities, share useful resources and signpost parents, families and children to appropriate reading material. The school takes part in World Book Day, where staff celebrate a host of authors and texts and encourage the pupils to do so.

We are part of the Nottingham lending library service where 100 books are loaned per half term, to support topic and provide interesting stimuli to all children.

During break and lunchtimes, books and magazine storage units are transported onto the playground to support reading for pleasure.

We have visits from a book fair and provide reading book tokens to celebrate success throughout the year, and our library **Bookingham Palace** is well stocked and maintained by school librarians.



# OUR PLEDGES



**We want our pupils to have drive and tenacity; to stick at a task; to understand how to work towards long term goals; and be able to pick themselves up and bounce back from life's challenges.**

These pledges are designed to support pupils with development of the following character traits - Resilient, Problem-Solver, Compassionate, Cooperative, Aspirational, Confident, Effective Communicator, Motivated, Tolerant, Honest.

**To take responsibility for their own safety, health and well-being.**

**To engage in fundraising and charitable events.**

**To take part in a presentation, sporting event or performance to an audience or in a public place.**

**To contribute to environmental sustainability.**

**To understand and learn from and about other cultures and faiths in our diverse community.**

**To help others through volunteering activities.**

**To be involved in a democratic process.**

**To experience educational visits/overnight residential trip.**

**To take an active role as a learner.**

**To understand the world of work and have high aspirations for their future.**

# QUALITY TEACHING

**Our core values are introduced in each year group to ensure that all pupils develop an awareness and understanding of how we embed them in our daily lives and throughout our school day.**

We aim for all teachers to believe and understand that they are the critical factor in pupils' lives and learning. We encourage all teachers to plan lessons through the eyes of the learners as individuals and to reflect constantly on refining the barriers to learning and how they present in the classroom on a daily basis.

- **Clear leadership with emphasis on 'quality first teaching'** Regular and rigorous monitoring ensures that teaching within the school is consistently good or better.
- **Meeting individual needs for all** Staff are regularly reminded to plan for the 'Alvaston Child', referring to the barriers that have been identified for our pupils, and implement strategies to break these.
- **Deploying staff effectively** Teachers are based in every classroom, and teaching assistants are deployed where the need is required across the school. We have a flexible approach to timetabling and supporting individual needs as and when they arise.
- **Data driven and responding to evidence** Pupil progress meetings are rigorous and strategic. Children's achievements and targets are updated on Target Tracker and reviewed by Year Group leaders and the Principal.
- **Behaviour and attendance** Consistent behaviour policy in line with the Alvaston Code and Alvaston values, with whole class weekly and half termly rewards; including golden time, postcards of praise, gold award winners and values champions of the term.
- **Opportunities** Through effective teaching and learning, children will experience both academic and social success. Each year group takes part in a trip beyond Alvaston each year, and we ensure that pupils are given the opportunity to take part in events such as classical music concerts; art and design technology competitions and the Derby Shakespeare festival.

# OUR SCHOOL DAY

8.40am	School Gate Opens SLT on duty	9.00am	Learning Begins
8.50am	School bell	12.00pm	Lunch
8.55am	Registration	1.00pm	End of Lunch break
		3.20pm	End of School

Unaccompanied children must not be on school premises before 8.40am unless attending our Breakfast Club which starts at 7.30am (£3.00 per session). AJs after school club runs from 3.30pm until 5.30pm (£4.00 per session).

## School Uniform

This can be purchased at <https://www.uniformeasy.com/find>

Please ensure you mark all clothes clearly with your child's name so we can return any lost property.

### Winter

**Grey** trousers / skirt / pinafore

**Blue or White** shirts / blouses / polo shirts

**Royal Blue** sweatshirt, sweater or cardigan

**Sensible black shoes or trainers.**

### Summer

**Grey** shorts / trousers / skirt

**Blue or White** checked dresses

**Blue or White** short sleeve shirts / blouses / polo shirts

**Sensible black shoes or trainers.**

### Games

Sweatshirt, jogging bottoms in winter, trainers or plimsolls.

### PE

T shirt, plain shorts, plimsolls.

### Swimming

One piece costume or trunks, towel in waterproof bag (Year 4)



## ● Jewellery

The wearing of jewellery for school is strongly discouraged, although a watch may be worn at the sole responsibility of the wearer.

In the case of pierced ears, we follow the guidance of Derby City LA in encouraging the wearing of studs (only one in each ear), rather than hoops. Jewellery cannot be worn for PE lessons as it presents a health and safety hazard. It is expected that any child wearing earrings or other jewellery will be able to remove them before the lesson, or leave them at home on the days they do PE. If they are unable to do this then they will have to sit out the lesson. Please note that the covering of earrings with tape is no longer recommended by the LA Health and Safety advisors.

## ● Illness & Emergencies/Medicines in School

Your parent/carer contact details are kept in school and we will contact you if your child becomes ill. If you are unavailable we will contact the emergency contact person you have nominated. If your child is unwell at home, please do not send them to school. Children cannot return to school within 48 hours of having had sickness and/or diarrhoea. Please ring school on 571321 to inform us if your child is not attending by 9.30 a.m.

No medicine must be brought into school by a child. No medicine will be given to a child unless a consent form has been signed by a parent/carer. All medicines must be in the original packaging, clearly labelled with child's name, and handed in at the Office where a consent form must be completed before it is left at school

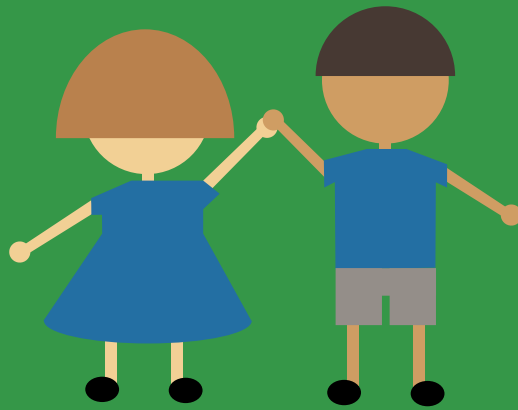
## ● Lunchtimes

Pupils have the option of having a hot, freshly cooked meal each day or they may opt to bring a packed lunch from home. We are a cashless school and use 'Parentpay' for all monetary payments – please log on and activate your account as soon as you receive the details.

We are a nut free school and therefore ask that you ensure that your child's packed lunch is nut free.

## ● Class Dojo

A reminder that messages from the Principal and the Class teachers are shared on Class Dojo. Once you are issued with this key information, please log on and sign up to this fantastic system.



We have confidence in our abilities

We show kindness every day

We respect ourselves and each other  
and are motivated in every way!

We are AJA!

**Alvaston Junior Academy**  
Elvaston Lane, Alvaston, Derby DE24 0PU

**Tel: 01332 571321 Email: [info@alvaston.theharmonytrust.org](mailto:info@alvaston.theharmonytrust.org)**  
**Head of Academy - Principal : Mrs Spencer-Lovesey**